



enterome
bioscience

Building the Leading Microbiome-derived Immunotherapy Company



Focused in harnessing immune function of the microbiome for the treatment of cancer and inflammatory diseases

- Proprietary microbiome-centric platform for target and drug discovery
- Developing small molecules and peptides targeting specific functions of the microbiome
- Platform can support rapid generation of IND candidates



Multiple programs in oncology, gastrointestinal (GI) and liver diseases

- EO2401 for glioblastoma (GBM) and solid tumors Phase 1 planned for 2Q 2019 and 3Q 2019, respectively
 - GBM data expected in 1H 2020
- EB8018 for Crohn's disease (CD) in Phase 1b; Phase 2 planned for 1Q 2019 and interim data expected mid-2020



Strategic development and commercialization partnership with Takeda for CD and liver cirrhosis



Strong IP portfolio



Significant partnerships with BMS, JNJ and Takeda



Committed syndicate of European VCs and strategic investors



Experienced leadership team with track record of success

Experienced Leadership Team

Management



Pierre Belichard
Chief Executive Officer, Director



SOFINNOVA



Juan Carlos Lopez Talavera
Chief Medical Officer

abbvie

Intercept



Christophe Bonny
Chief Scientific Officer

bicycle
therapeutics



Rodolphe Clerval
Chief Business Officer



genzyme



Marie-Laure Bouttier
Chief Corporate Officer



fovea



Christelle Dumoussaud
Chief Financial Officer

dermophil
indien

FOURNIER
PHARMA



Simon Baeriswyl
Chief Operating Officer



BCG
THE BOSTON CONSULTING GROUP

Board of Directors

Georges Gemayel
Chairman of the Board

Isabelle de Cremoux
Director / Seventure Partners

Andrea Pederzoli
Director / Principia

Roger Garceau
Director / Independent

Johan Kördel
Director / Lundbeckfonden Ventures

Cathy Kerzner
Director / Nestlé

Pierre Cassigneul
Director / Independent

Mary Thistle
Director / Independent

A Novel Clinical Pipeline



	Programs	Indication / Target	Preclinical	Phase 1	Phase 2	Milestones	Development Partner	Commercial Rights
Gastrointestinal	EB8018	Post-Operative Crohn's Disease				Q1 2019: Initiate Phase 2a trial Mid-2020: Interim data		
		Active Crohn's Disease				Q1 2019: Phase 1b data readout		
		Liver Cirrhosis				Q3 2019: *Initiate Phase 1 trial		
	EB110	Crohn's Disease						
	EB410	5HT Agonist				H1 2020: Initiate Phase 1 trial		
	EB420	Undisclosed Target						
Immuno-oncology	EO2401	GBM				Q2 2019: Initiate Phase 1b trial 1H 2020: Phase 1b data readout		
		Solid Tumors				Q3 2019: Initiate Phase 1b trial		
	EO2463	Carcinomas + Check Point Inhibitors				Q3 2019: Filing IND		
	EO520	Immune Enhancers						

*Note: Final trial design subject to review and approval with development partner.

Enterome and Takeda Collaboration for EB8018



- ✓ Takeda is a world leader in inflammatory bowel disease (IBD)
- ✓ Enterome and Takeda have an existing drug discovery collaboration focused on microbiome targets across multiple gastrointestinal disorders
- ✓ **Second strategic collaboration for EB8018: *A new gut-restricted oral targeted therapy for IBD***
 - Novel mechanism of action
 - Target validation through translational studies
 - Safe and well tolerated in Phase 1a
- ✓ **Deal structure summary:**
 - Global licensing and co-development
 - U.S: Profit and cost sharing + co-promotion
 - Ex-U.S: Royalties on net sales
 - Payments:
 - Upfront: \$50 million + commitment to future equity investment
 - Development and commercial milestones: Up to \$640 million

The Gut Microbiome – Host Immunity Interface

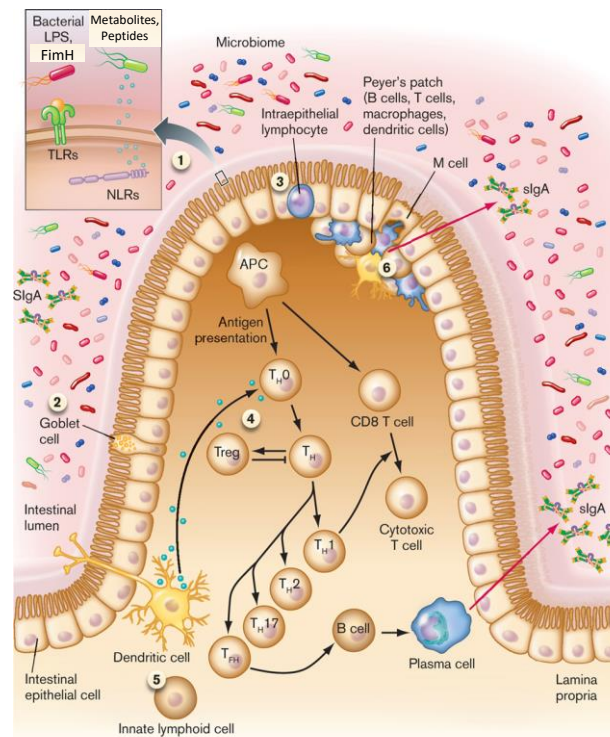


- ✓ The **gut** is the largest lymphoid organ in the body with **>70% all T-cells**, and is home of the vast majority of memory T-cells
- ✓ Existing immunotherapeutic approaches have so far ignored the **gut** as the largest component of the immune system

Discovering molecular mechanisms involved in the crosstalk between gut microbes and mucosal/intestinal immune system

Alteration in microbiome composition is a major determinant of immune mediated/driven disorders

- Small molecules designed to block bacterial factors interacting with innate receptors
- Bacterial components translocating in lamina propria:
 - Metabolites
 - Peptides
 - Outer membrane vesicles
- Bacterial components interacting with intraepithelial immune cells
- Mechanisms leading to active translocation of bacteria in lamina propria



Gastrointestinal

(Inflammatory bowel disease and Liver)

Overstimulation of the mucosal immune system in IBD leads to chronic rejection of the microbiome

Cancer

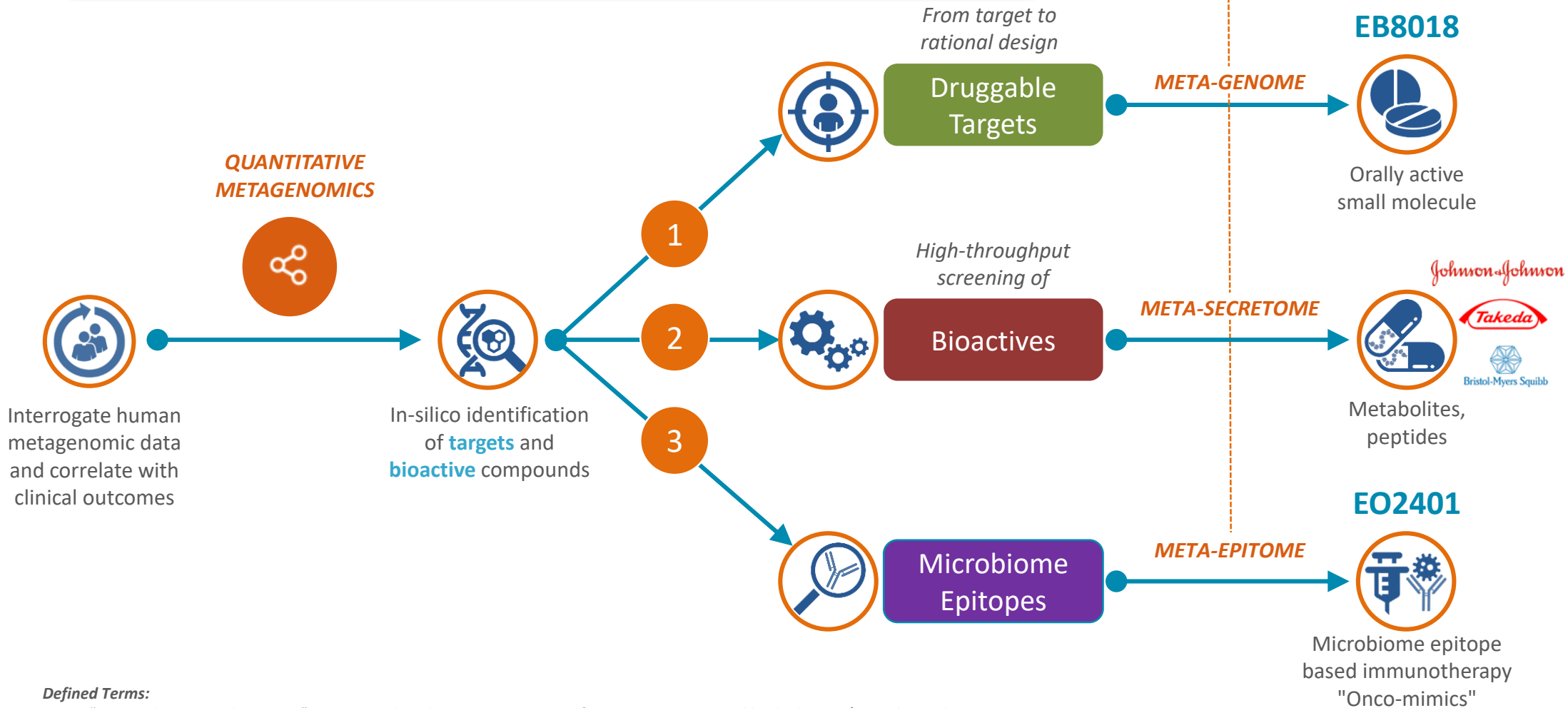
An intact gut microbiome is needed to support anticancer therapies, requiring immune activation

Discovery Engine Platform



A 3-arm product generating platform

- 1 Druggable microbiome targets
- 2 Microbiome-derived active molecules
- 3 Bacterial associated antigens (BAAs) mimicking human epitopes



Defined Terms:

BAAs: "Bacterial Associated Antigens" are any predicted antigens originating from proteins expressed by the human/animal microbiome.

Onco-mimics: a subclass of BAAs with relevant properties.

Summary



Company Highlights

Inflammatory Bowel Diseases

- EB8018: First-in-class small molecule
- Takeda and JandJ collaborations

Immuno-oncology

- EO2401: Novel immunotherapy approach
- BMS collaboration

Top tier healthcare and corporate investors

Upcoming Milestones

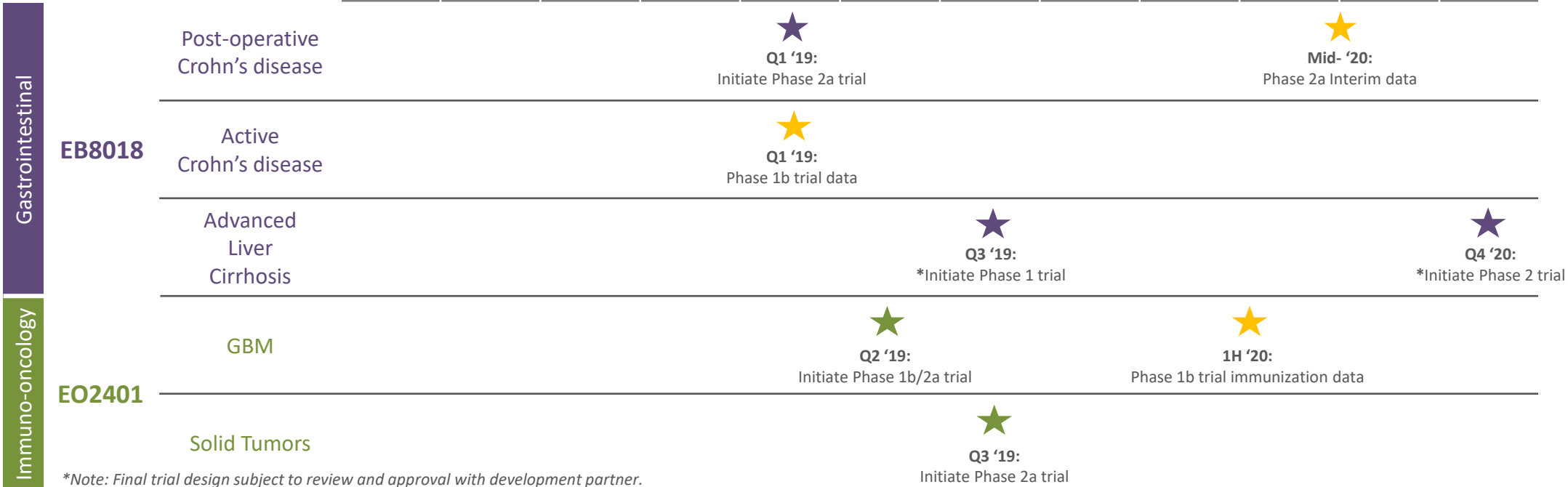
EB8018

- Q1'19: Phase 1b data in active CD
- Q1'19: Initiate Phase 2a in post-operative CD, interim data expected in mid-'20
- Q3'19: *Initiate Phase 1 in liver diseases

EO2401

- Q2'19: Initiate Phase 1b/2a in GBM, data expected in 1H'20
- Q3'19: Initiate Phase 2 in other solid tumors

2018				2019				2020			
Q1	Q2	Q3	Q4	Q1	Q2	Q3	Q4	Q1	Q2	Q3	Q4



*Note: Final trial design subject to review and approval with development partner.